



PORT LOCATION: 12N

PAIR	CONSISTS OF:
FG38-30687-S15	FG38-30686-S15
	FG38-30686-S15

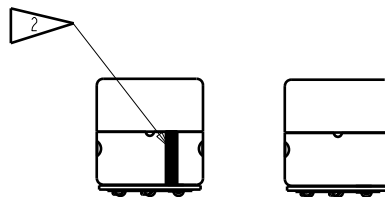
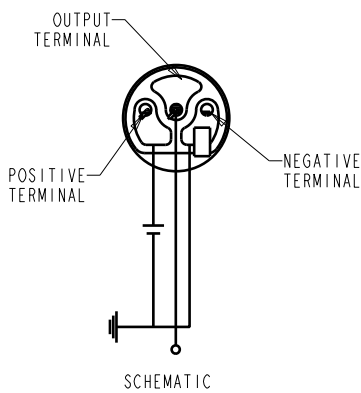
TEST CONDITION					
PARAMETERS	UNIT	MINIMUM	NOMINAL	MAXIMUM	REMARKS
DC POWER SUPPLY	VDC	-	1.3	-	-
DC LOAD	Ohms	-	-	-	-
AC LOAD	μF	-	-	-	-

PERFORMANCE						
PARAMETERS	UNIT	MINIMUM	NOMINAL	MAXIMUM	REMARKS	
MATCHING CRITERIA	1000 Hz SENSITIVITY	dB	-2.0	-	2.0	RANGE OF DEVIATION BETWEEN MICROPHONES
	200 Hz PHASE	DEGREES	-1.5	-	1.5	
	5000 Hz PHASE	DEGREES	-5.0	-	5.0	
	7000 Hz SENSITIVITY	dB	-1.0	-	1.0	

NOTES:

1. SENSITIVITY AND PHASE VALUES INDICATED ON THIS SPECIFICATION ARE VALID AT TYPICAL TEST ENVIRONMENT: 50% RH, 21°C (70°F)

2. BLACK STRIPE INDICATES MICROPHONE WITH GREATER PHASE VALUE AT 200Hz.



Revision	C.O. #	Implementation Date	RELEASE LEVEL	REVISION
B	M10104117	5-23-11	Active	B
A	M10103128	9-9-09		

**KNOWLES ELECTRONICS**  
ITASCA, ILLINOIS U.S.A.

WHEN TEST LIMITS ARE USED TO ESTABLISH INCOMING INSPECTION ACCEPTANCE/REJECTION CRITERIA, CORRELATION OF TEST EQUIPMENT WITH KNOWLES IS ALSO REQUIRED FOR ELIMINATION OF EQUIPMENT AND TEST METHOD VARIATION

TITLE: **MICROPHONE**  
PERFORMANCE SPECIFICATION

**FG38-30687-S15**  
SHT 2.3

DR. BY	DATE
SDZ	9-9-09
CK. BY	DATE
GJP	9-10-09
APP. BY	DATE
GJP	9-10-09